

# User Interface

Datawasher provides each user with its own interface, using a secure connection through a common browser, where they can manage Quarantine areas and configure their service preferences.

The User Interface is easy and simple to use also for inexperienced users because it does not require any kind of technical knowledge or specific skills to manage it, reducing the time of employee's adaptation.

Datawasher Interface does not require any installation and it has been created in order to be a useful and intuitive tool for companies.

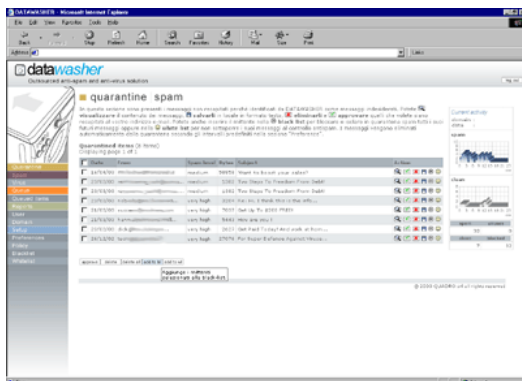
### No more password to remember

Accessing to Datawasher Interface is as simple as a click because users do not have to introduce themselves or remember the access password. **The system does it for you!**

Datawasher runs on an innovative system that generates and introduces automatically new passwords every time that users want to get into Datawasher Interface, making the process of log-in easier and guaranteeing the security and privacy of each user.

### Quarantine areas

Although spam and virus message's block is made to guarantee company's productivity and security it is essential for users to have the ability to read **all the** messages received. To avoid the loss of those potentially important, Datawasher allows users to view, via web and in a safe way, all unwanted or infected messages in the Quarantine area. Thus, the Quarantine is a protected area inside of Datawasher system where users can manage -with no risk of infection -messages containing virus and those considered spam.



### Reports

Users have access to **real-time graphical reports** of Datawasher filtering activity about user's traffic or about the whole domain's traffic.



Besides providing information of Datawasher's activity, reports are useful for controlling company's Internet bandwidth usage and verifying the capacity and performance of company's e-mail system. Datawasher *Enterprise* allows you to receive reports by e-mail on a monthly, weekly or daily basis.

### Alerting

Datawasher includes an alert service to keep users informed about new quarantined messages. Through the User Interface, customers can configure which kind of alert they would like to receive (virus alerts or spam alerts) via e-mail and also its frequency.

*Enterprise* version includes, also, an **application client for Microsoft Windows**, installable on the computer's traybar, that keeps users informed in real time about new quarantined messages.

Also by clicking on the traybar's icon it is possible to have a direct and quick access to the User Interface.

### Policy Enforcement

Customers can personalize Datawasher's behaviour obtaining the highest productivity and taking full-advantages from the solution.

Policies can be configurable according to each user's requirements or, in case of the *Enterprise* version, Company's IT managers can be allowed to establish general policies for the whole company.

This flexibility enables users to adapt Datawasher's behaviour to their individual situations or companies to establish general rules for all departments, like forbidding the spreading of videos, unwanted photographs or mp3 documents inside the company's network.